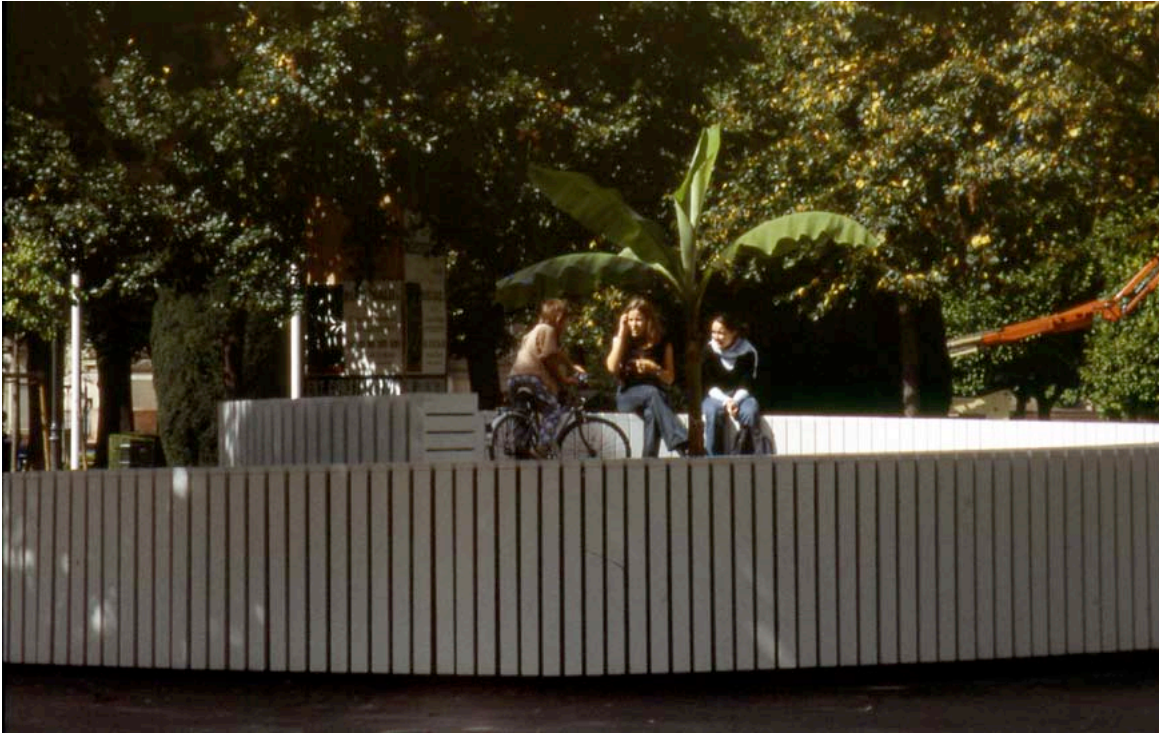


Warburg-Spiral, 2002
A monument to the living
Place de la République, Strasbourg
Permanent urban installation



In the historical square "Place de la République" in Strasbourg, there is a war memorial named Monument for the Dead. As a complement to this sculpture, a Monument for the Living made of wood and banana trees.

Dialectical Leap, 1998

Manifesta 2, Casino Luxembourg – Forum d'art contemporain, Luxembourg



A perfumed shuttle-bus service, with soundtrack, operated between the Casino Luxembourg and the birthplace of Karl Marx. The tour was a thirty minute trip taking visitors from the show in the city of banks to the home of the author of Das Kapital.

"M'ambo" 2000
Stampa digitale su PVC
128 x 196 cm
Edition: 1/3
Courtesy Galerie Erna Hécey



Project for the City Center of Munich.

"AQ" 1999
262 x 250 cm
Installation, sound
Courtesy Galerie Erna Hécey, Luxembourg



A space constructed to enable one person at time to isolate herself from the crowd, accumulating pure energy by absorbing the vibrations of a unique fusion of natural and artificial sounds.

"F.M.1", "F.M.2", "F.M.3", "F.M.4", "F.M.5",
1999

160, 5 x 79 x 79 cm

5 headphones with mussels

Courtesy Galerie Erna Hécey



This work is dedicated to the composer Filippo Magliano who decreed that all the scores he had written should be destroyed the day after his death.

"Untitled/Untitled" 2001

Isola Project, Isola, Milano

100m x 2,50m white fence, 3 structural segments, 4 meters each.



Una barriera simbolica realizzata lì dove il comune di Milano vuole costruire una strada distruggendo il giardino pubblico del quartiere Isola. Questo progetto fa parte dell'Isola Art Project e fu realizzato con l'aiuto di Cantieri Isola.

"Fischbehn" 2001

Legno, pittura bianca, metallo

Ed. 3

Dimensions : 196 x 36 x 59 x 39,7 cm. cad.

Courtesy Galerie Erna Hécey



Photo: Roman Mensing / artdoc.de

Salto Mortale, Museum of Sepulchral Culture, Kassel, curator Florian Matzner

"Palma clandestina", 2002
Urban action, Isola Project, Isola, Milano



Dietro ad uno dei 3 moduli bianchi dell'installazione Untitled/Untilted viene piantata una palma.

"Russel Prosthesis 01" 2002
Biennale di Gwangju, Corea



Architectural prostheses are additions to already existing architectural elements. Prostheses for buildings: limbs temporarily connected to existing structures. Correctives, which remedy flaws or expand the palette of functions. They can be designed for all kinds of buildings and architectural elements.

out (Office for Urban Transformation / Ufficio per la Trasformazione Urbana), 2002
Stecca degli Artigiani, Via Confalonieri 10, Isola, Milano



The idea of out is based on the collaboration between the different forms of intelligence and creativity to produce together a new form of art. Its field of intervention and diffusion shouldn't be limited to the contemporary art world, but should rather extend itself to all sectors of the society.

The sphere in which out intends to act is threefold: 1. analysis and study of the social and urban situations, 2. the project for its possible transformations, 3. the practical actions for its fulfillment.

"The true artist..." 2003
Stained glass window, Tillandsia



Permanent installation at Musée national d'Histoire et d'Art, Luxembourg

"Fuad Labord", 2003

Video installation: 2 DVD projections, 4 speakers, 2 amplifiers

Dimensions: ca 2,70 x 3,80 m

DVD Jungle (left) – DVD City (right)

Edition of 3 + 1 AP



Photo: © Ilmari Kalkkinen et Mamco, Genève

"Tirana pa makina" 2003
Stampa digitale su PVC
133, 5 x 196 cm
Edizione: 1/3



Biennale di Tirana, 2003.

"Isola Project Milano" 2003

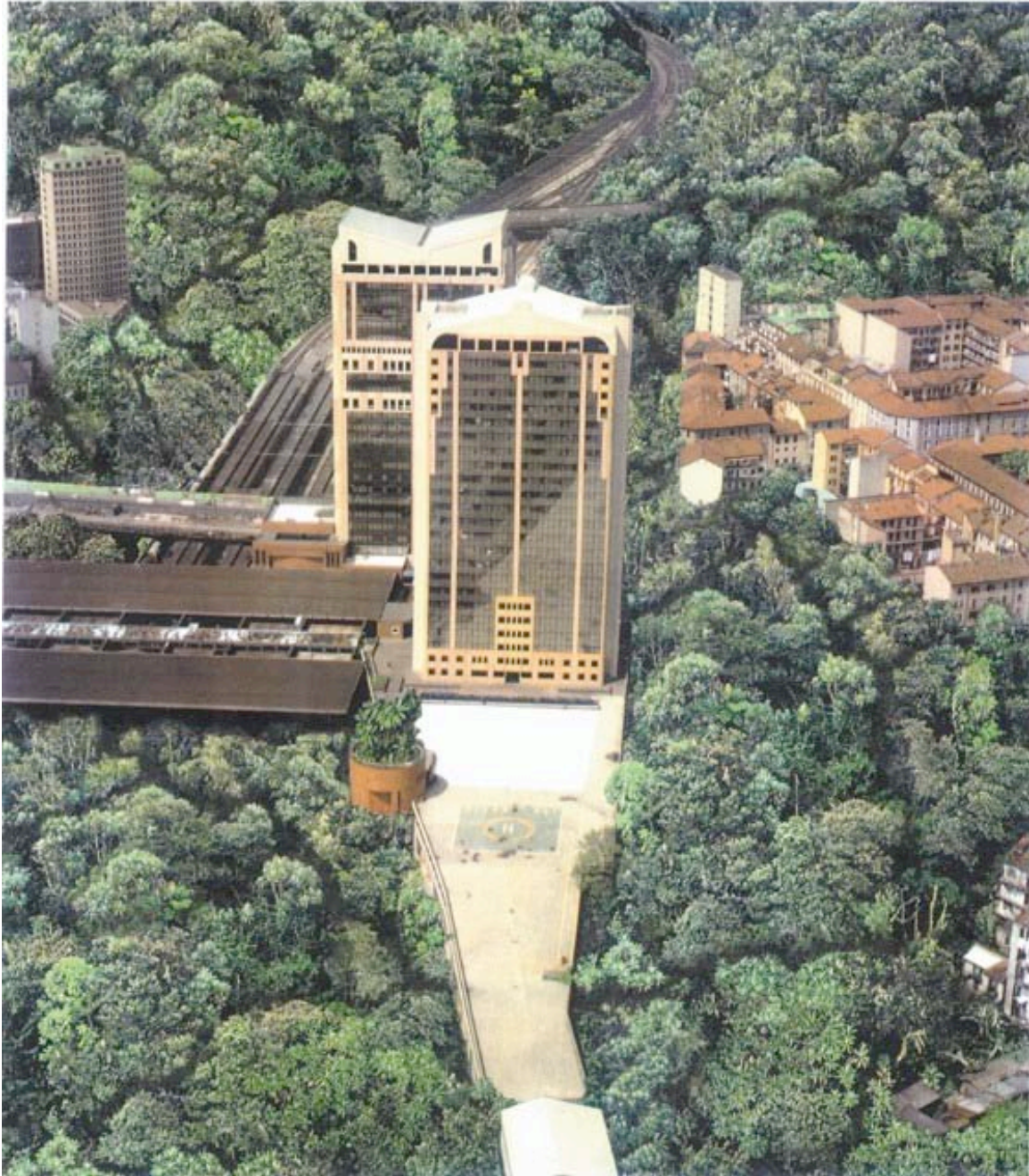
Serigrafia

39,7 x 47,5 cm (senza cornice)

Edizione 50



"Isola Project Milano", 2003
Impressione digitale su PVC
133,5 x 196 cm
Edition 1/3



Project for the city of Milan

"It's not up to us to supply reality" model, 2004
176 x 45 x 45 cm



"It's not up to us to supply reality", 2003
Sample for a stained steel window.



"KB Project", 2004
Serigrafia
Courtesy Galerie Erna Hécey



"Growing House", 2004
Shenzhen International Public Art Exhibition, China.
The Fifth System - Art in the Area of Post-Planning.



"out", "Oficina de Transformación Urbana", Mexico D.F., 2004



The topic of discussion is the requalification of Santa Maria La Ribera, a central neighborhood in Mexico City. This zone, situated very near the historic center has had an uprising development of popular housing over the last few years. This fact is jeopardizing the borough's architectural assets. Architects, urban planners, artists and government officials will have weekly meetings in order to suggest possible solutions for the borough's problems.

Collaborations include Mexican artists and architects / Con la collaborazione degli artisti ed architetti messicani: Axel Aranò, Laura Cohen, Claudia Fernández e Lorenzo Rocha Cito.

"European Pentagon (Safe & Sorry Pavilion)", Bozar, Bruxelles, 2005



Bert Theis European Pentagon (Safe & Sorry Pavilion), Bozar, Bruxelles 2005

